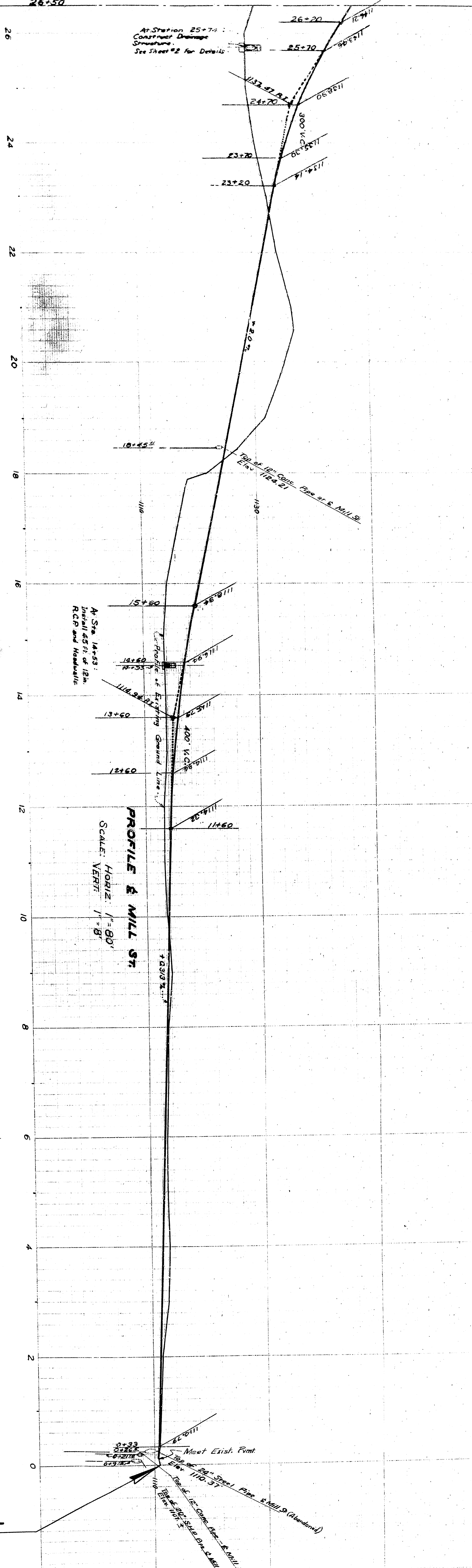
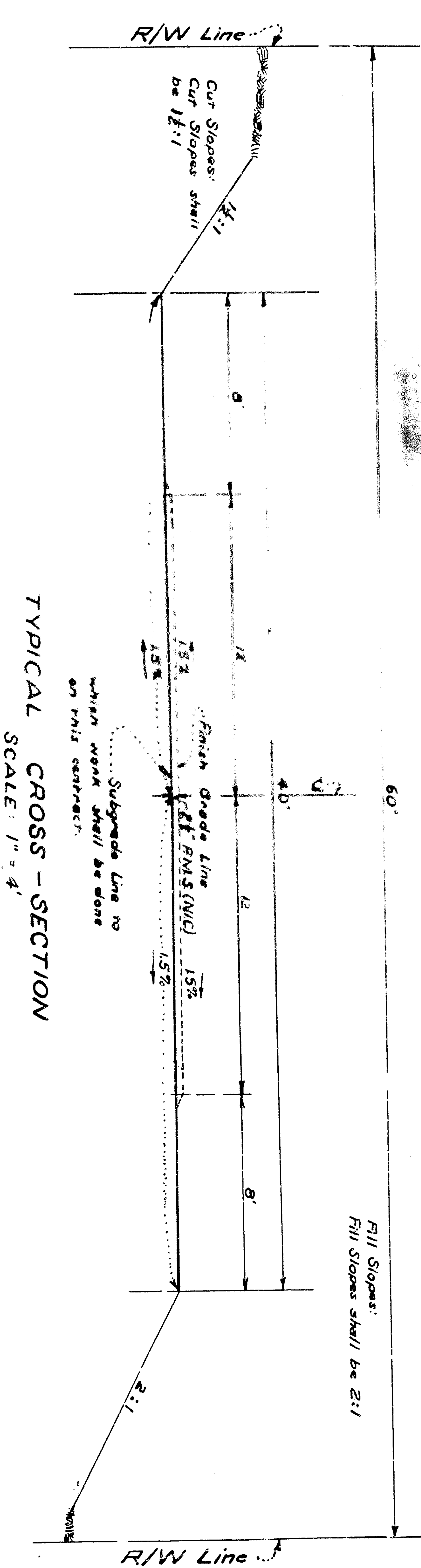


Continued on Sheet #2 MATCH LINE 26+50

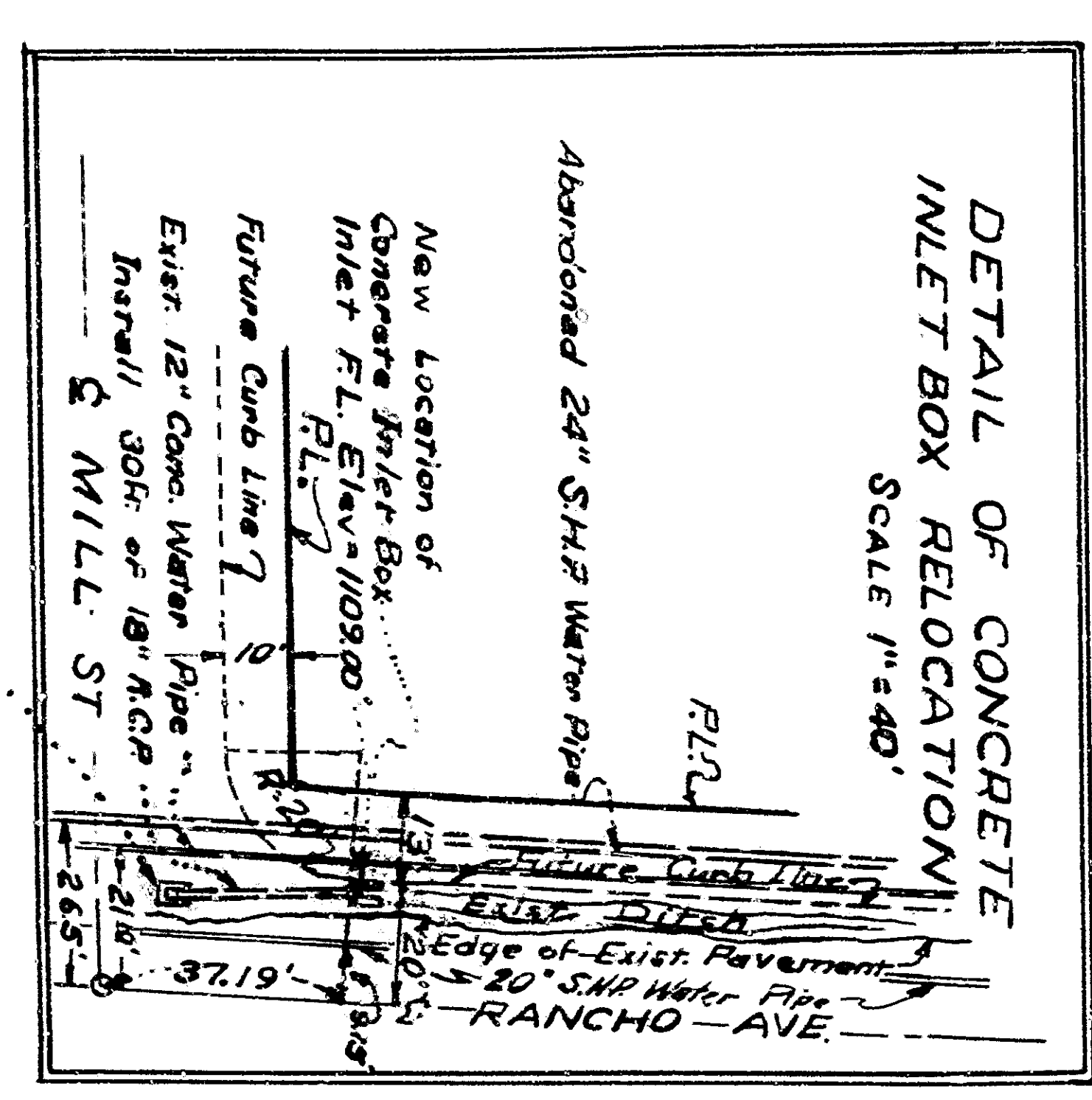


At Station 25+74:  
Construct Drainage  
Structure.  
See Sheet #2 for Details.

At Station 25+74:  
Install 18\"/>



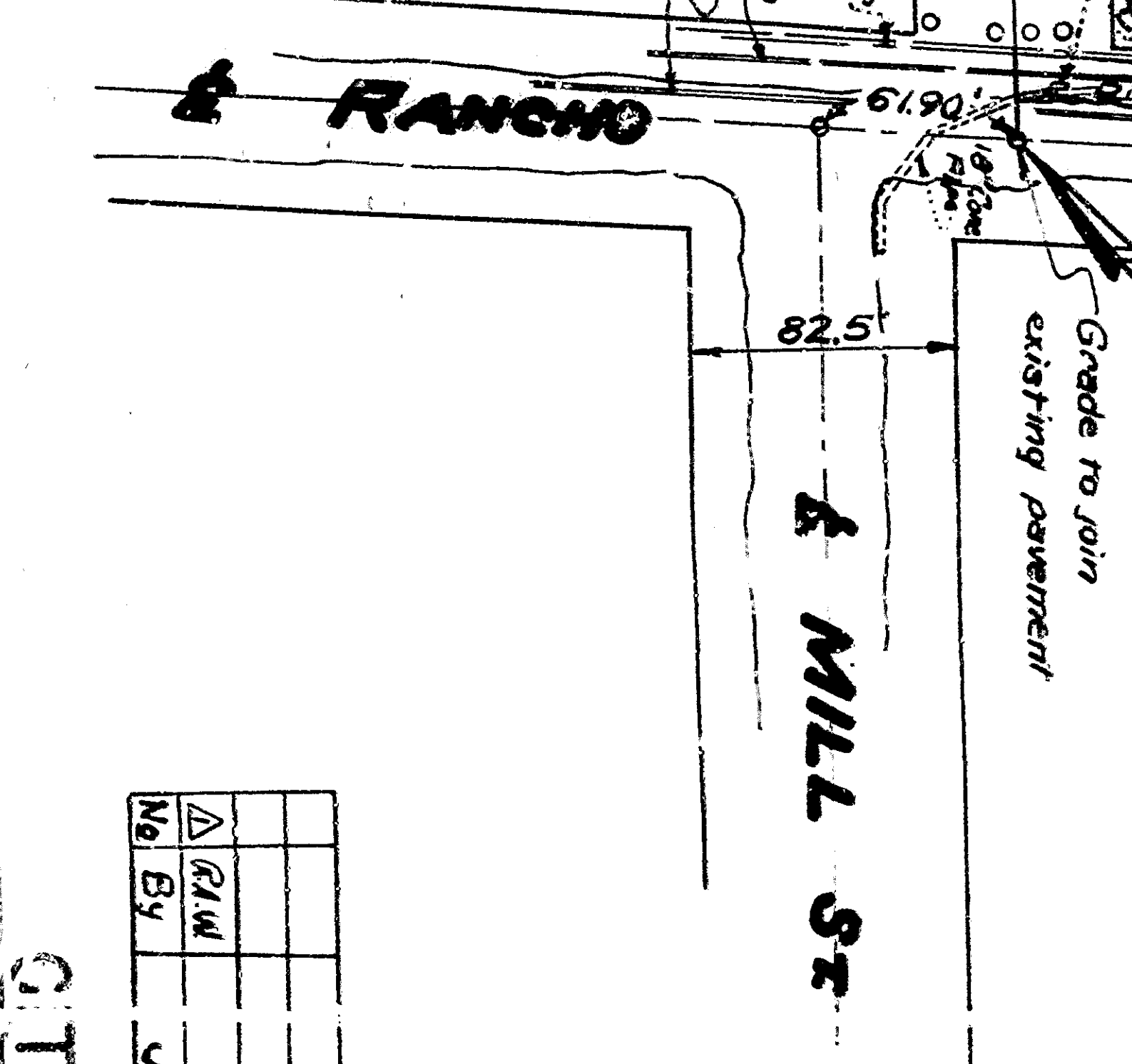
TYPICAL CROSS-SECTION  
SCALE: 1\"/>



NOTE:  
At Sta 18+60.3, grade existing dirt road for a distance of 100 ft. north and 100 ft. south of the existing road. Stationing is to extend 20 ft. from the center line of the road on all times during construction.

Notes:  
\* - To be removed under this contract.  
N/C - Not in contract. (To be removed by others)  
R/R - Remove and Replace under this contract as directed by the Engineer.  
To this elevation shown herein add 0.70' to obtain M.S.L. Datum

Site List of Job Change Description  
 Δ Move drainage structure from Sta. 23+00 to Sta. 23+74  
 - Change grade from Sta. 23+20 to Sta. 25+74  
 Δ At Sta. 25+00 change 12\"/>



RAMIRO AVILA  
 GRA  
 C.T.Y.O.